

Way of Light

Gift & Memorial Consideration

Vision and Background

About Way of Light

Main Gate and Station Design

Station available for Sponsorship





Vision

- *A Christian community following Christ, living in hope for eternal life.*
- *(without anxiety and avoidance for earthly end-of-life).*



What we Do

*We bury the dead, comfort families, evangelize the living,
educate and support families to prepare for end of life and
provide sacred space for prayer and worship.*



Background

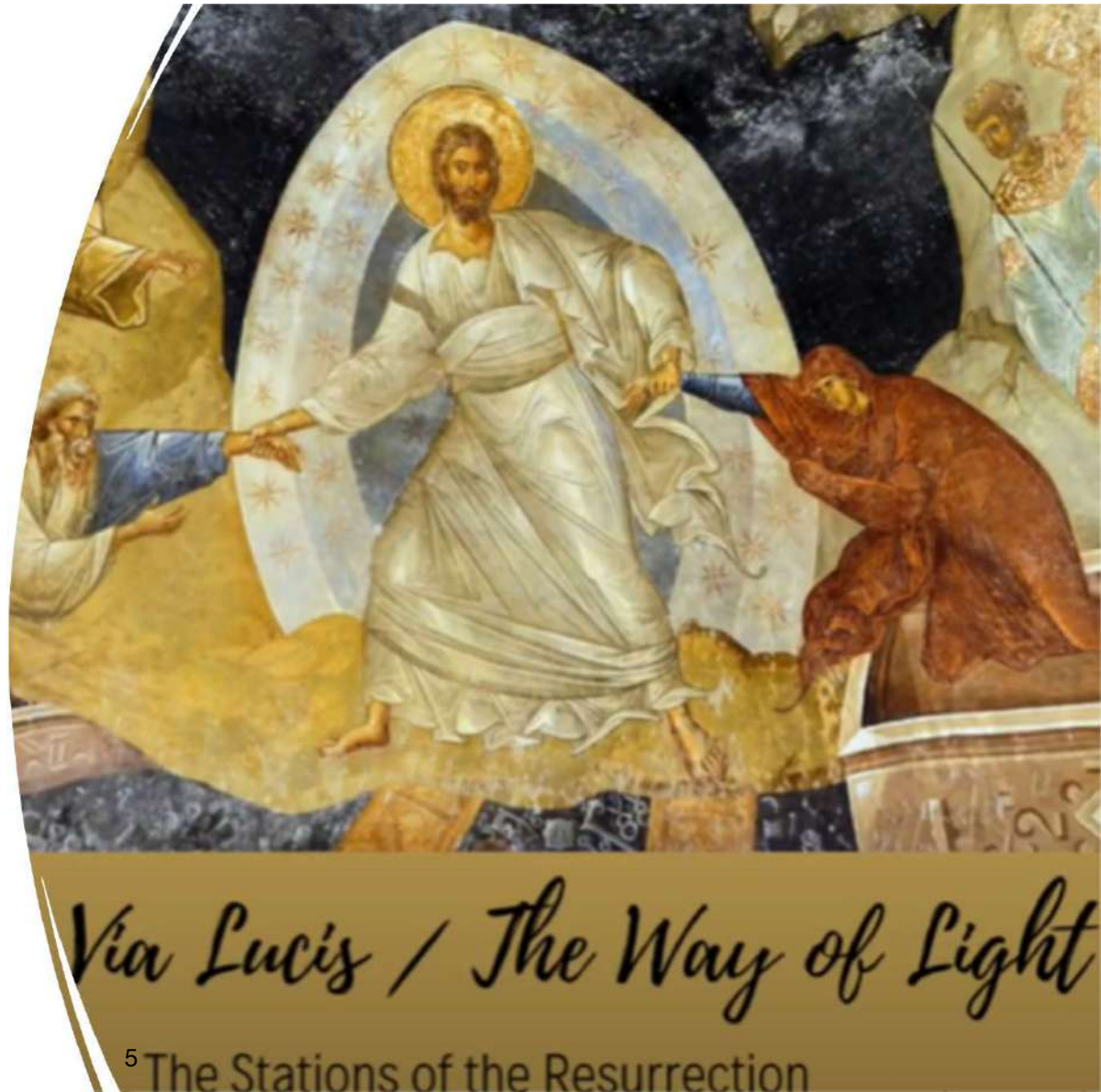


- ✓ *The Gardens of Gethsemani is the Archdiocese main cemetery*
- ✓ *New sections are being added as needed to serve the community*
- ✓ *A lesser known devotion called Way of Light was discovered in use by Father Don Larson who was guiding RCIA Catechumens after their Easter baptism*
- ✓ *The Gardens of Gethsemani has been developing a Way of Light section that features 14 prayer stations which are available to the community as a prayer walk and devotional space*
- ✓ *Gardens is seeking sponsorship of the stations to help beautify the Gardens and to provide a devotional prayer area – also known as Via Lucis or the Stations of the Resurrection*
- ✓ *The section juxtaposes the Via Crucis section on the opposite side of the waterway which is used for Lenten Way of the Cross devotional prayer*

About The Way of Light

- Also known as Via Lucis or Way of the Resurrection – it is a devotional prayer
- 14 Stations commemorating Christ's Resurrection to His Ascension
- Approved by the Congregation for Divine Worship and the Discipline of the Sacraments
- Discovered in a parish doing a post Easter devotion for new catechumens
- Section provides a devotional prayer area, like a Rosary Walk, or doing the Lenten Stations of the Cross
- Metaphor of a journey moves from experience of suffering, to the hope of arriving at man's true end: liberation, joy and peace – essential paschal values.
- Opportunity to sponsor the section entrance feature or one or more of the 14 bronze stations (plaque/ pedestal etc.).

Reference: vialucis.org





Recognition



A gift can be recognized with a bronze memorial plaque or granite engraving dedicated to the donor. The station makes available inurnment options which is available to sponsors.

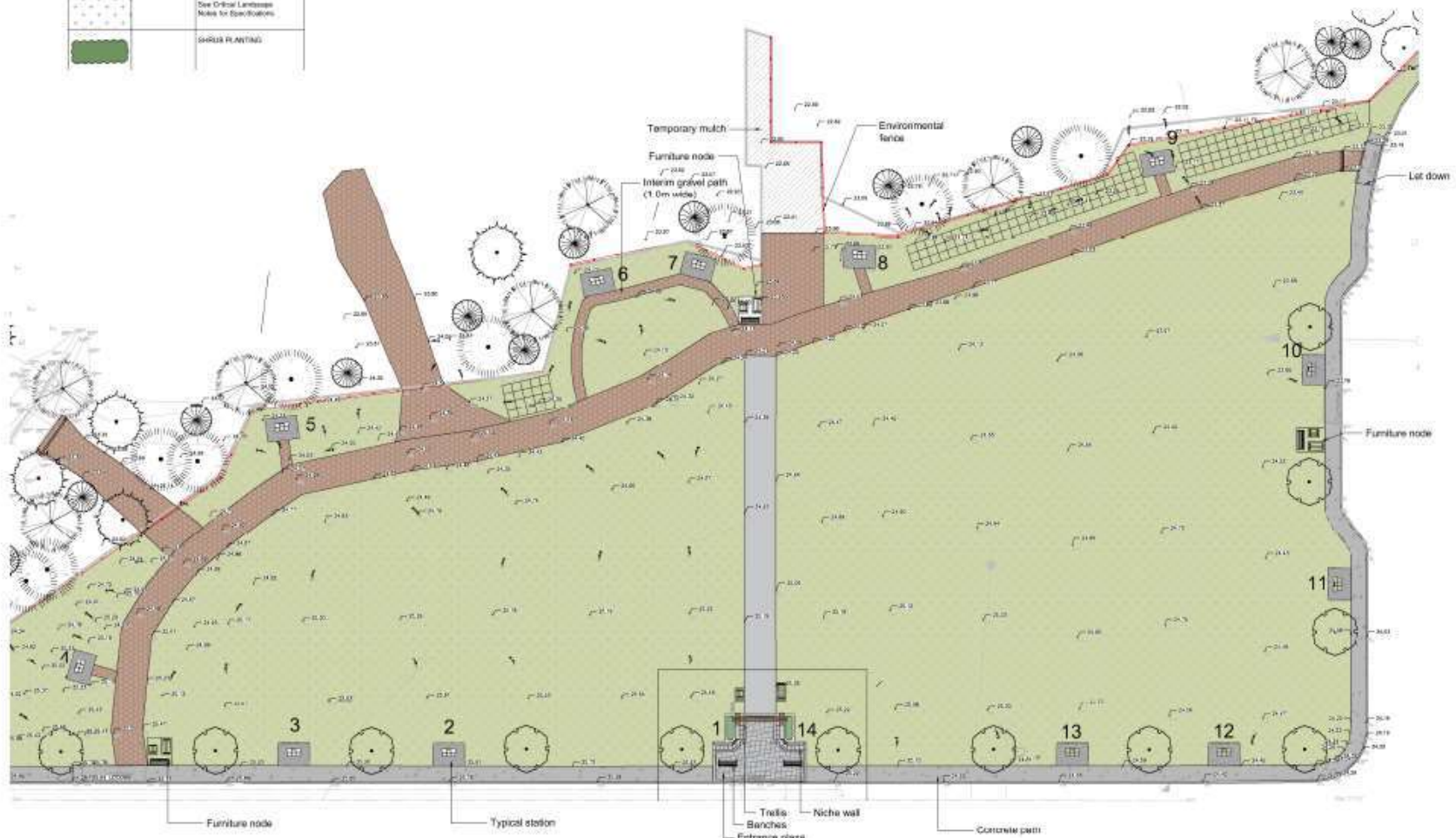
Way of Light – Site

14 Stations, Main entrance Gate (2 stations), devotional walkway, planting plan, benches

SOFTSCAPE MATERIALS

KEY	REF.	DESCRIPTION
		SOD See Critical Landscape Notes for Specifications
		SHRUB PLANTING

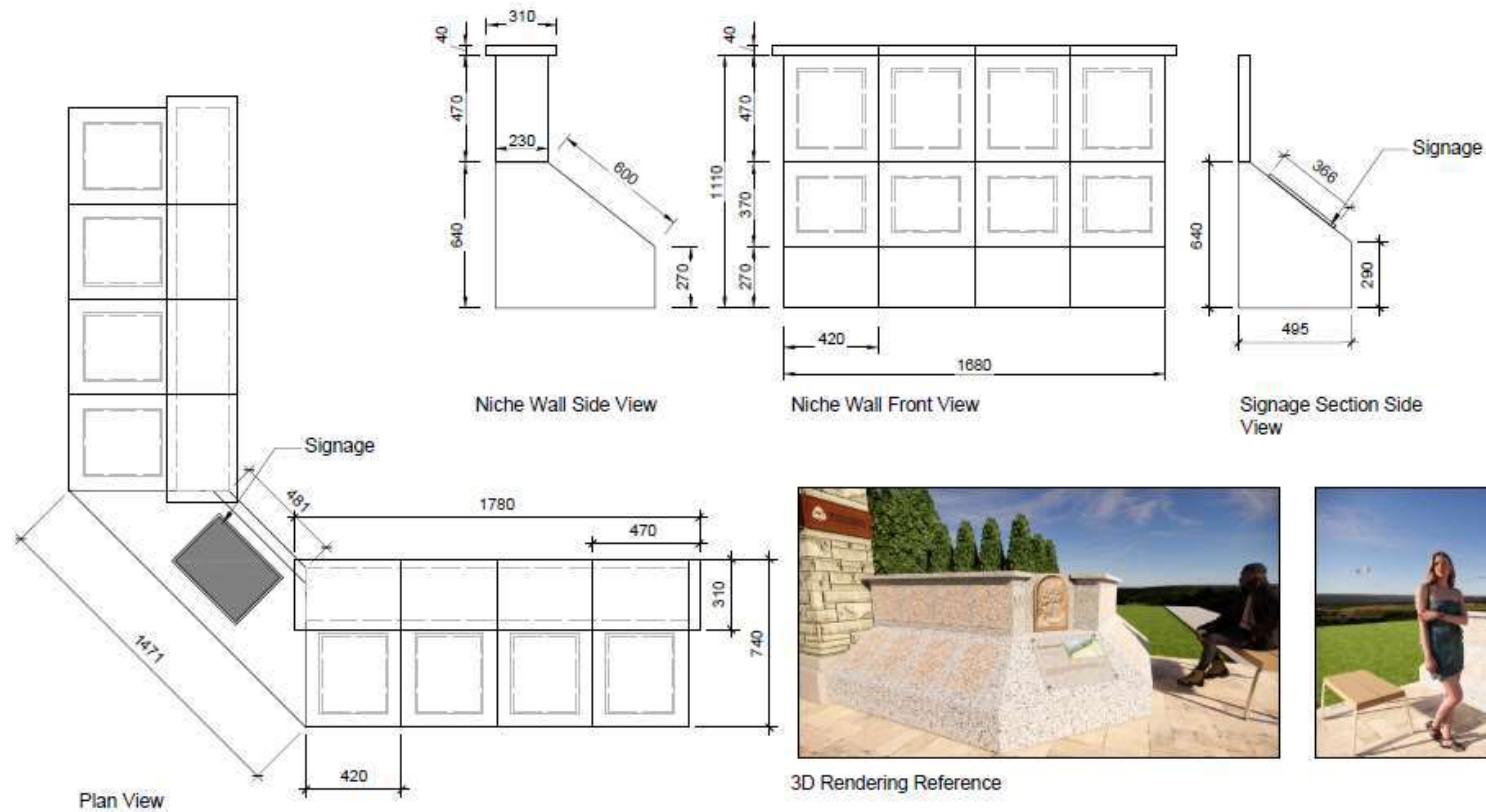
1.5 m
3 m
Roadside Section, typ.



Way of Light – Entrance



Way of Light – Entrance



3D Rendering Reference



G A



VDZ+A
LANDSCAPE ARCHITECTURE | CIVIL ENGINEERING | LIGHT POLLUTION

DRAWING TITLE
WAY OF LIGHT ENTRANCE NICHE WALL

PROJECT NO.
DP2020-01

PROJECT
Gardens of Gethsemani

SEAL

DRAWN

SCALE

v.org

Section Entrance – Sponsorship

2 bronze reliefs – Station I and XIV	\$18k
Stations I and XIV – entrance trellis, plaza, planting, fees	\$140k
<u>Bench on each side of entrance (2)</u>	<u>\$ 8k</u>
Total	\$164k

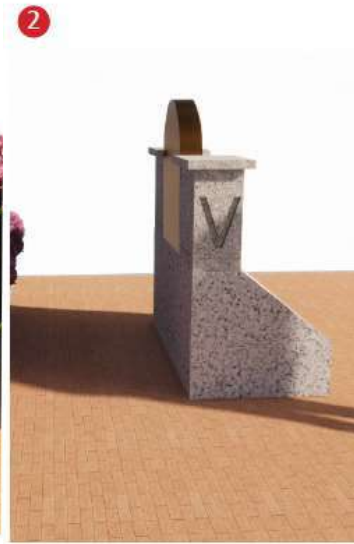
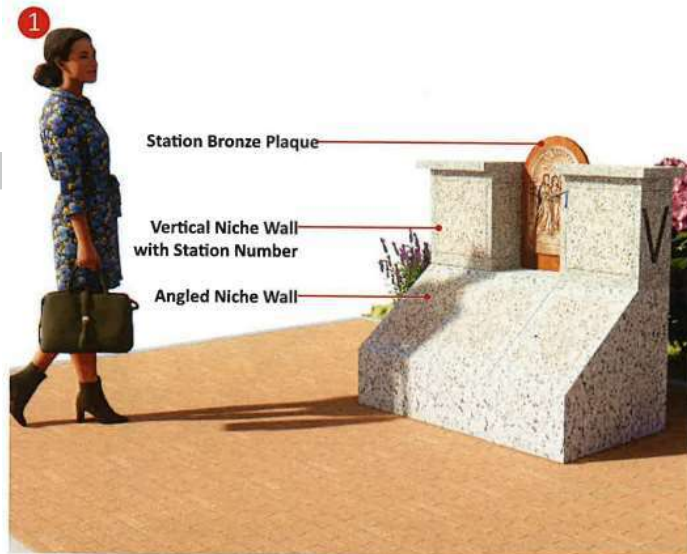
Sponsorship includes 2 inurnments for cremation or 2 inground plots

Sponsorship includes donor recognition plaque (or nothing if preferred)

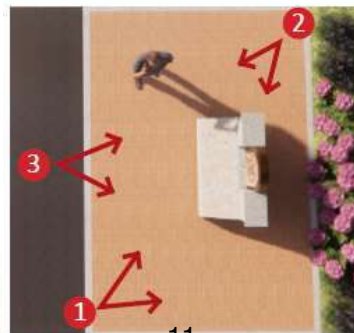
Opportunity to sponsor 1 station only \$82k

Way of Light –Station Design

Bronze placed within Station

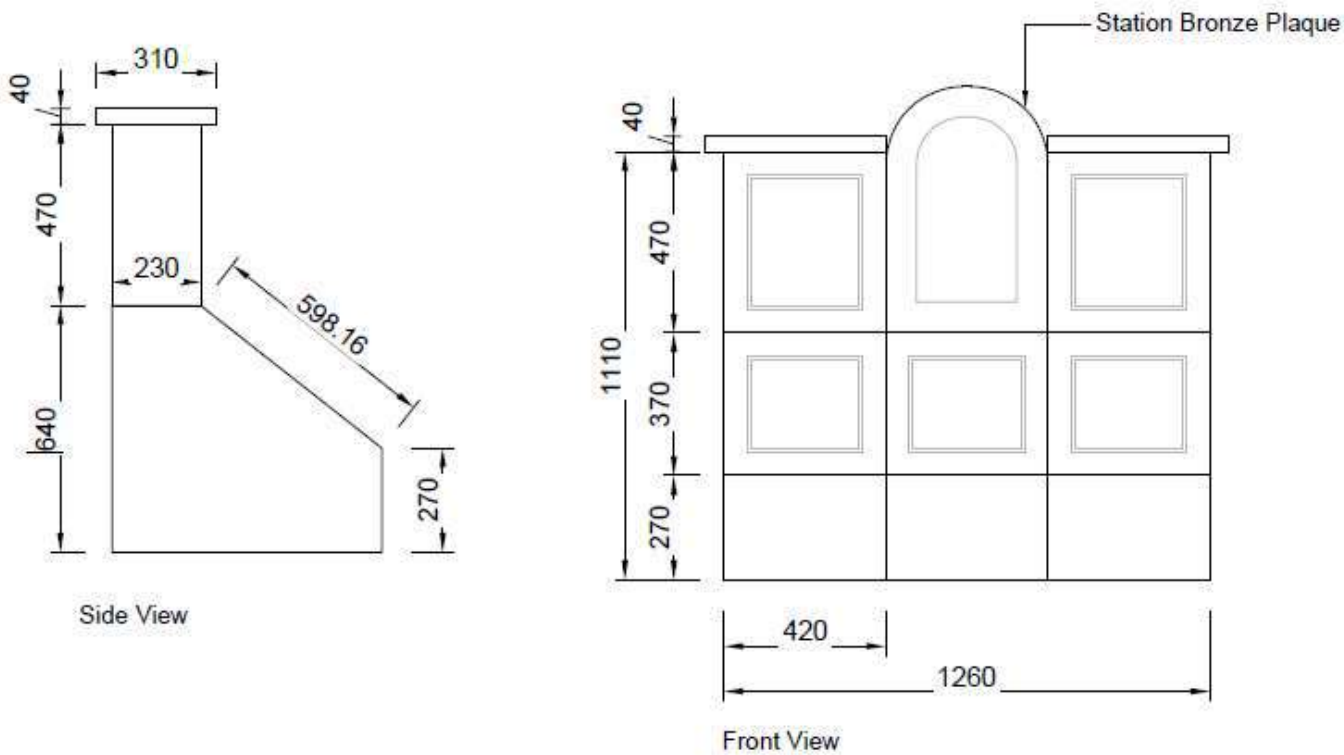


Niche Wall



Way of Light – Design & Material

Bronze placed within Station



Station – Sponsorship of a Station

Bronze Relief	\$9k
Granite station	\$10k
Station base, platform, landscape planting	<u>\$18k</u>
Estimate	\$37k

Station sponsorship include a niche for 2 cremations or 2 inground plots

Sponsorship includes donor recognition plaque (or none if preferred).

Immaculata Monastery &
Spirituality Center

That in all things God may be glorified!

Stations of Light

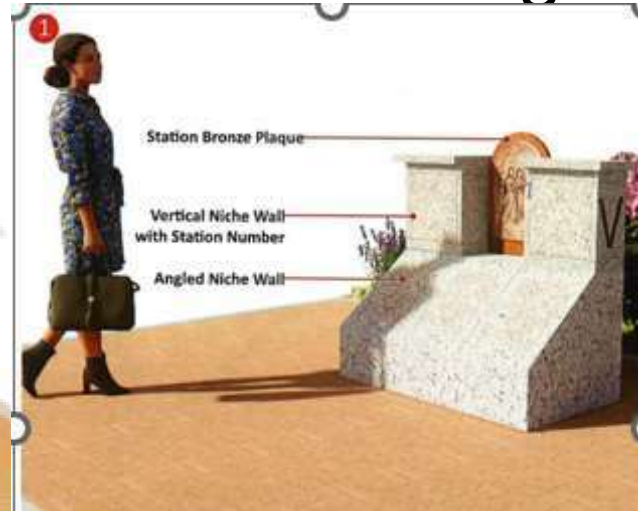


Way of Light – Bronze Reliefs

- . Developed for a benedictine monastery in Nebraska
- . Molds available
- . 14 units ordered for the Gardens of Gethsemani



Way of Light – 14 Stations Design



I The Resurrection



II The Empty Tomb



III Appearance to Mary Magdalene



IV Road to Emmaus



V Christ Reveals Himself



VI Christ Alive to Disciples



VII Reconciliation



VIII Faith of Thomas



IX Sea of Tiberias



X Declaration of Peter



XI Mission



XII Ascension



XIII Waiting with Mary



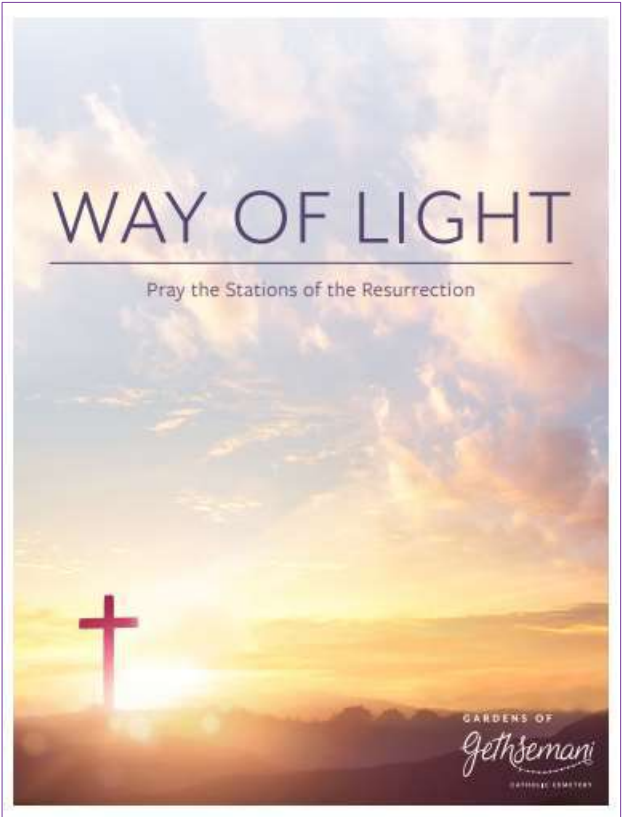
XIV The Spirit



WoL – Prayer Resources

TABLE OF CONTENTS

Invitation	iii
Stations of the Resurrection	3
Opening Prayer	3
I. The Resurrection	4
II. The Empty Tomb	4
III. Appearance to Mary Magdalene	5
IV. Road to Emmaus	6
V. Christ Reveals Himself	6
VI. Christ Alive to Disciples	7
VII. Reconciliation	8
VIII. Faith of Thomas	9
IX. Sea of Tiberias	9
X. Declaration of Peter	9
XI. Mission	10
XII. Ascension	10
XIII. Waiting with Mary	11
XIV. The Spirit	11
Closing Prayer	11
Sources	11



I The Resurrection



Prayerbook compliments section/ Easter
Web page: <https://rccav.org/light/>

Opportunity to support the printing of prayers
books for parishes Marcy 2024 \$15k

Thank you for the Consideration

Peter Nobes

Director of Gardens of Gethsemani

pnobes@rccav.org

Cel. 604-365-2030