

GARDENS OF
Gethsemani

Way of Light

Gift & Memorial Opportunity

RCCAV.ORG/GIVING





Gardens of Gethsemani Vision

A Christian community following
Christ, living in hope for eternal life.



What we do

We evangelize the living, educate and support families to prepare for end of life, bury the dead, comfort families, and provide sacred space for prayer and worship.



Seeking support for the 14 Stations of the Resurrection – the Way of Light

Sponsorship Options

I

Sponsor one
Entrance Station I
or XIV for \$82k

- Bronze Relief \$9k + Trellis, plaza, planting, fees \$70k + Bench \$4k
- Includes 2 cremation niches
- Tax receipt for \$61k

II

Sponsor both
Entrance Stations I
& XIV for \$164k

- 2 Bronze Reliefs \$18k + Trellis, plaza, planting, fees \$140k+2 Benches \$8k
- Includes 4 cremation niches
- Tax receipt for \$122k

III

Sponsor a single
Station (II through
XIII) for \$37k

- Bronze Relief \$9k + Granite station \$10k + platform, planting \$18k
- Includes 2 cremation niches
- Tax receipt for \$16k

Sponsorship includes donor recognition plaque (or nothing if preferred)

Background

- ✓ The Gardens of Gethsemani is the Archdiocese main cemetery
- ✓ A lesser known devotion called the Stations of the Resurrection, the Way of Light was discovered in use by Father Don Larson who was guiding RCIA Catechumens after their Easter baptism
- ✓ The Gardens has been developing the Way of Light section featuring 14 prayer stations which are available as devotional space and area for burial
- ✓ Gardens is seeking sponsorship of the stations to help beautify the Gardens
- ✓ The section juxtaposes the Stations of the Cross on the opposite side of the waterway which is used during Lenten for devotional prayer

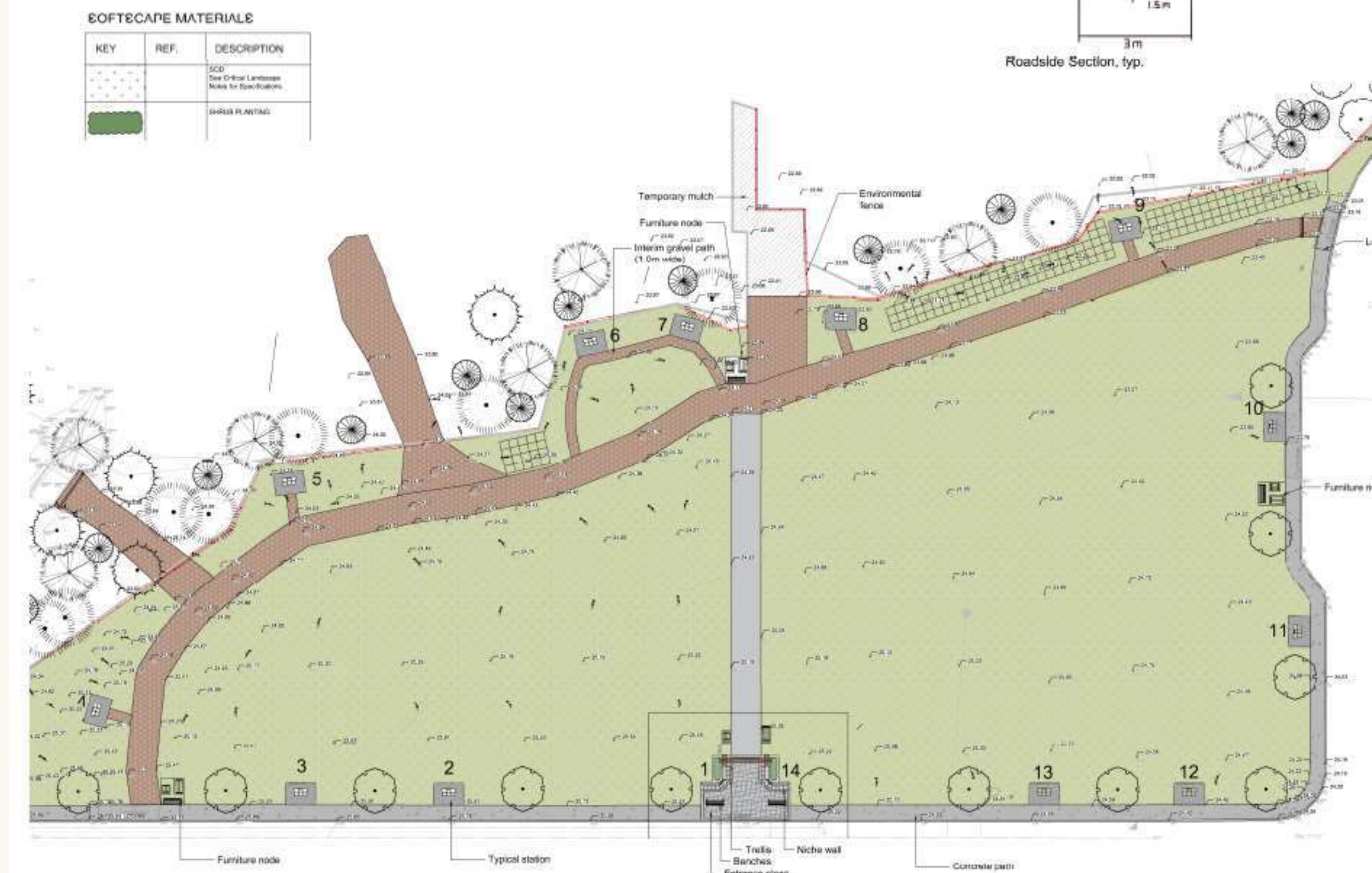


About the Way of Light

- ✓ Also known as Via Lucis or the Stations of the Resurrection – it is a devotional prayer
- ✓ 14 Stations commemorate Christ's Resurrection to His Ascension/ then descent of the Holy Spirit
- ✓ Approved by the Congregation for Divine Worship and the Discipline of the Sacraments
- ✓ Metaphor of a journey moves from experience of suffering, to the hope of arriving at man's true end: liberation, joy and peace – essential paschal values
- ✓ Opportunity to sponsor the section entrance feature or one or more of the 14 bronze stations.

Way of Light: Site

*14 Stations, Main
entrance Gate
(2 stations),
devotional walkway,
planting plan, benches*



Way of Light Station design

Bronze placed within station

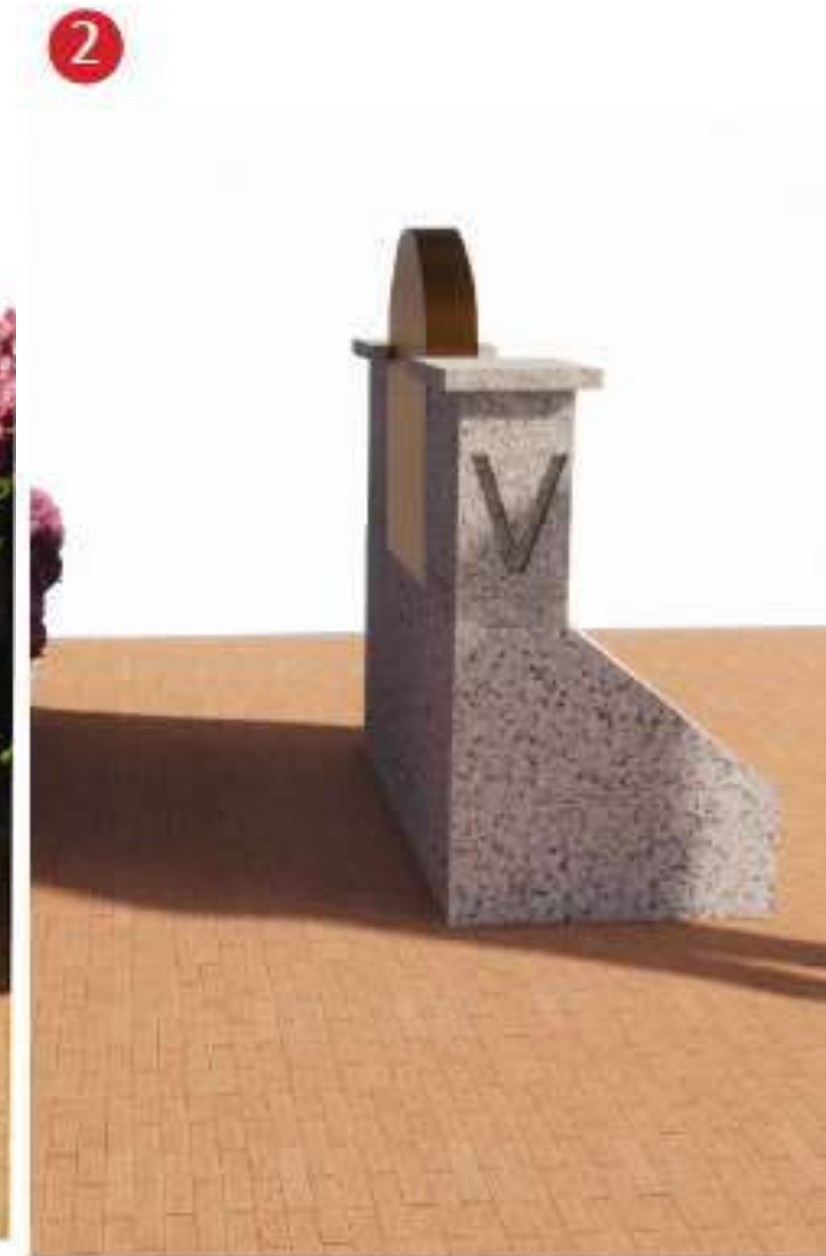
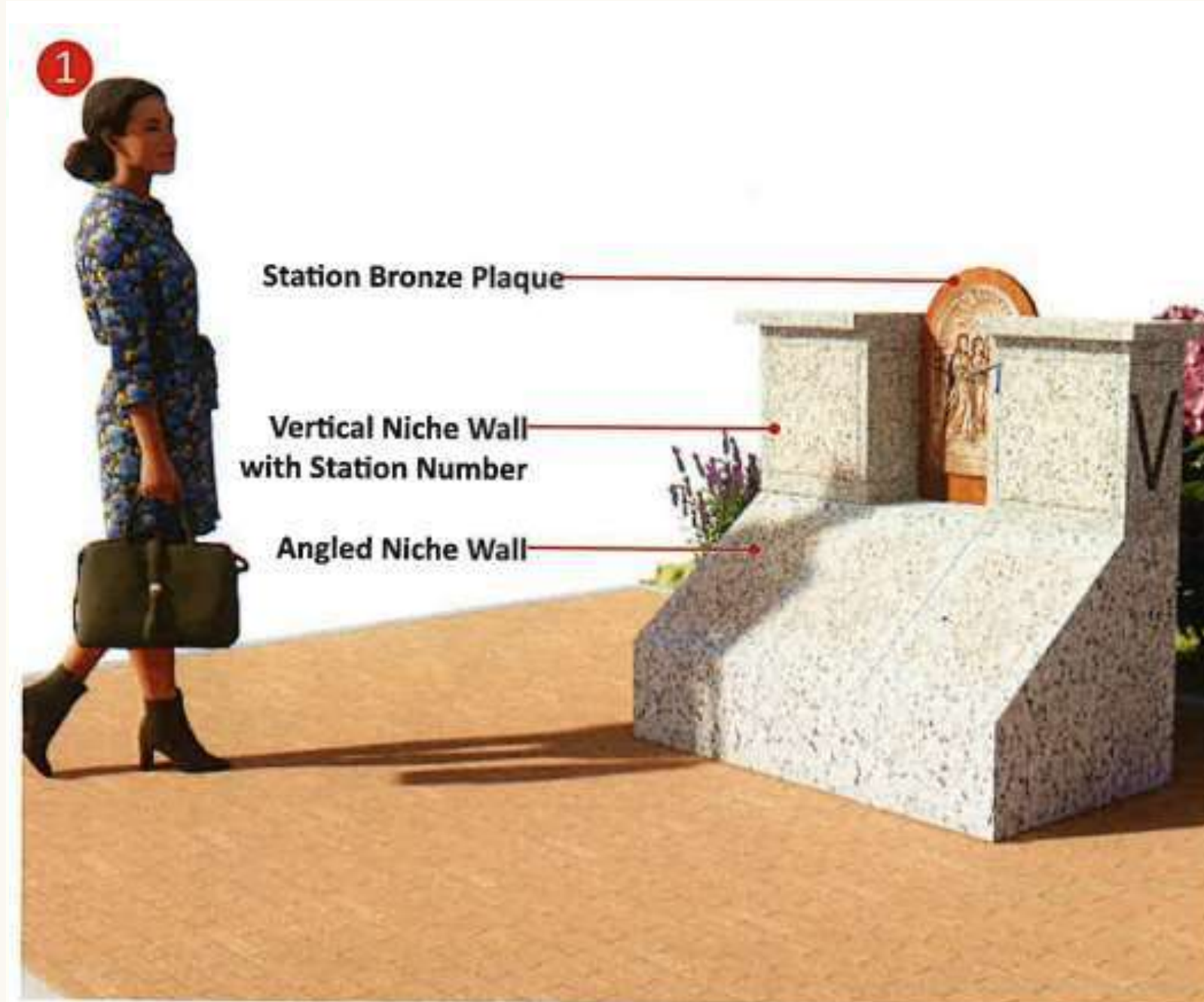
Adjacent niches within package

Memorial plaque to be placed just under bronze relief

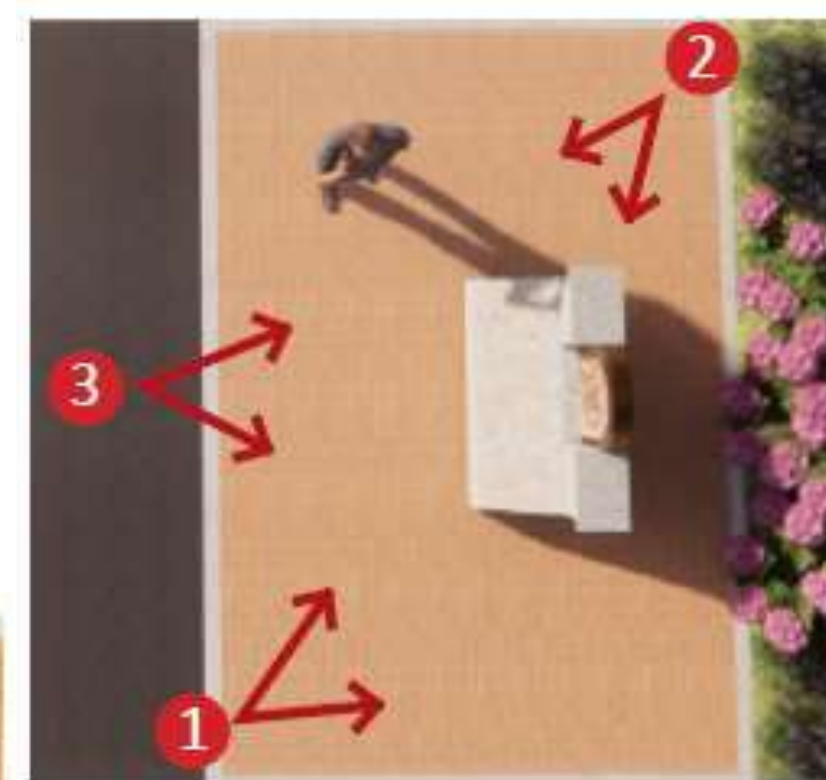


Way of Light: Station design

14 Stations, Main entrance Gate (2 stations), devotional walkway, planting plan, benches



Niche Wall



Sponsorship Options

I

Sponsor one
Entrance Station I
or XIV for \$82k

- Bronze Relief \$9k + Trellis, plaza, planting, fees \$70k + Bench \$4k
- Includes 2 cremation niches
- Tax receipt for \$61k

II

Sponsor both
Entrance Stations I
& XIV for \$164k

- 2 Bronze Reliefs \$18k + Trellis, plaza, planting, fees \$140k+2 Benches \$8k
- Includes 4 cremation niches
- Tax receipt for \$122k

III

Sponsor one
Station II through
XIII for \$37k

- Bronze Relief \$9k + Granite station \$10k + platform, planting \$18k
- Includes 2 cremation niches
- Tax receipt for \$16k

Sponsorship includes donor recognition plaque (or nothing if preferred)

Availability*

Station	Status	Station	Status
I	Available	VIII	Available
II	Available	IX	Available
III	Available	X	Available
IV	Available	XI	Available
V	Available	XII	Available
VI	HOLD	XIII	SOLD
VII	HOLD	XIV	Available

* Check with a Gardens Manager for the latest status

Way of Light: Bronze reliefs

*Developed for a
Benedictine monastery
in Nebraska*

*14 units procured for
Gardens of Gethsemani*



Immaculata Monastery &
Spirituality Center

That in all things God may be glorified!

Stations of Light



Thank you for your consideration

Peter Nobes

Director of Gardens of Gethsemani

pnobes@rccav.org

Cel. 604-365-2030

Mike Mahony

Director of Development

mmahony@rcav.org

Cel. 604-719-7758